

This design has been kindly donated to Médecins Sans Frontières as part of the p/hop project. p/hop = pennies per hours of pleasure. Please use this knitting pattern and in return donate what you think it was worth to MSF.

To find out more and donate visit www.p-hop.co.uk

Find out more about MSF at www.msf.org.uk/phop

Thank you for supporting MSF! Happy Knitting!



Ceridwen

BY SUE LAZENBY



Ceridwen (pronounced ker-ID-wen) is the crone aspect of the Celtic triple goddess and she is associated with change and rebirth. Her main symbol is the legendary cauldren that contained a brew of inspiration and knowledge. To reflect the cauldren shape and the intricacy of Celtic knotwork, I designed a semi circular shawl in two cabled patterns with cabled panels framing the main cabled sections. It would be suitable for an intermediate knitter used to cabled knitting.

© 2014, Sue Lazenby (suseknits). All rights reserved. This pattern is intended for personal use only, any other copying or selling is prohibited.

Finished Measurements

Fingering weight: Width: approx. 51" - 59" / 130 - 150 cm. Depth: approx. 19" - 20" / 48 - 50 cm

Materials Fingering weight yarn, 420 yd / 384 m 100 g. Preferably all wool or a wool blend.

Approx. 875 - 1260 yd / 800 - 1152 m.

Needles: 40" / 100 cm circular: US # 6 / 4.0 mm or size to achieve desired gauge.

Needle size is a recommendation only.

Waste yarn (& crochet hook if required) for provisional CO; cable needle; 6 stitch markers; blocking wires & pins

Gauge 4" / 10 cm, measured over main cable pattern:

Fingering weight on 4 mm needles before blocking: 36 sts / 34 rows; after blocking: 24 sts / 27 rows

Gauge is not critical and is a personal choice depending on chosen yarn, although this may change overall measurements.

Abbreviations

2/2 LC: slip 2 sts to cn, hold to front, k2, k2 from cn

2/2 LPC: slip 2 sts to cn, hold to front, p2, k2 from cn

2/2 RC: slip 2 sts to cn, hold to back, k2, k2 from cn

2/2 RPC: slip 2 sts to cn, hold to back, k2, p2 from cn

BO: bind off

CO: cast on

cn: cable needle

inc(s): increase(s)

k: knit

k3tog: k 3 sts together

ktbl: k through back of loop

m: marker

p: purl

pfb: purl into front & back (inc one)

pm: place marker

rpt: repeat

RS: right side

slm: slip marker

sts: stitches

WS: wrong side

k2togtbl: k 2 sts together through back of loop

Pattern notes

The shawl starts with a provisional CO and working a tab in the 12 st cable panel pattern. Stitches are picked up along the side of this to start the shawl which has 3 sections of the main cable pattern with the cable panel pattern at each side, so there are 4 of these worked in total. Increases are made at either side of the 2 central panels as well as at the edges (6 incs per RS row). Both cable patterns have a 20 row repeat and can be worked as many times as desired. The shawl is finished with a 3 st i-cord BO.

Directions

CO 12 sts using a provisional method.

Row 1(RS): knit

Work in the CABLE PANEL pattern as follows (or CABLE PANEL chart, page 6 starting with row 2):

Row 2: k2, p8, k2

Row 3: p2, k2, 2/2LC, k2, p2

Row 4 & all remaining WS rows: knit the k sts & purl the p sts

Row 5: p2, (2/2RC) twice, p2

Row 7: 2/2RPC, 2/2LC, 2/2LPC

Row 9: k2, 2/2RPC, 2/2LPC, k2

Row 11: 2/2RC, p4, 2/2RC

Row 13: k4, p4, k4

Row 15: 2/2RC, p4, 2/2RC

Row 17: k2, 2/2LPC, 2/2RPC, k2

Row 19: 2/2LPC, 2/2LC, 2/2RPC

Row 20: knit the k sts & purl the p sts

Next row (& row 1 of all following rpts): p2, (2/2RC) twice, p2

Rows 2 – 20: as rows 2 – 20 above

Work the 20 rows 3 times in TOTAL & then rpt rows 1 – 19 again (79 rows from CO)

Turn work 90 degrees & pick up & ktbl 66 sts along side edge of the cable panel tab, turn work 90 degrees & pick up sts from provisional CO working row 19 as above into these 12 sts. (90 sts)

Turn work to begin with WS next.

Next row (WS): (k2, p8, k2, pm, k3, p8, k3, pm) three times, k2, p8, k2

SET UP PATTERN (20 rows) (or charts p.6, following instructions on p.5). 6 incs every RS row:

Row 1(RS): [p2, (2/2RC) twice, p2, slm, pfb, p2, 2/2LC, 2/2RC, p2, pfb, slm] three times, p2, (2/2RC) twice, p2

Row 2 & all WS rows: knit the k sts & purl the p sts (the pfb on RS are worked as k on WS)

Row 3: [p2, k2, 2/2LC, k2, p2, slm, pfb, p1, 2/2RPC, 2/2RC, 2/2LPC, p1, pfb, slm] three times, p2, k2, 2/2LC, k2, p2

Row 5: [p2, (2/2RC) twice, p2, slm, pfb, p2, k2, p2, k4, p2, k2, p2, pfb, slm] three times, p2, (2/2RC) twice, p2

Row 7: [2/2RPC, 2/2LC, 2/2LPC, slm, pfb, p3, 2/2LPC, 2/2RC, 2/2RPC, p3, pfb, slm] three times, 2/2RPC, 2/2LC, 2/2LPC

Row 9: [k2, 2/2RPC, 2/2LPC, k2, slm, pfb, p6, 2/2RPC, 2/2LPC, p6, pfb, slm] three times, k2, 2/2RPC, 2/2LPC, k2

Row 11: [2/2RC, p4, 2/2RC, slm, pfb, p5, 2/2RPC, p4, 2/2LPC, p5, pfb, slm] three times, 2/2RC, p4, 2/2RC

Row 13: [k4, p4, k4, slm, pfb, p4, 2/2RPC, p8, 2/2LPC, p4, pfb, slm] three times, k4, p4, k4

Row 15: [2/2RC, p4, 2/2RC, slm, pfb, p1, k2, p2, k2, p12, k2, p2, k2, p1, pfb, slm] three times, 2/2RC, p4, 2/2RC

Row 17: [k2, 2/2LPC, 2/2RPC, k2, slm, pfb, 2/2RPC, p2, 2/2LPC, p8, 2/2RPC, p2, 2/2LPC, pfb, slm] three times, k2, 2/2LPC, 2/2RPC, k2

Row 19: [2/2LPC, 2/2LC, 2/2RPC, slm, pfb, p1, k2, p6, 2/2LPC, p4, 2/2RPC, p6, k2, p1, pfb, slm] three times, 2/2LPC, 2/2LC, 2/2RPC (150 sts)

MAIN PATTERN (or charts on p. 7) note there are 12 incs on rows 21 & 51:

Work in Main Cable pattern with 4 Cable Panels as follows repeating the pattern in [] s three times as indicated. There will be 6 sts increased every RS row:

Row 1: [p2, (2/2RC) twice, p2, slm, pfb, *p2, 2/2LPC, p6, 2/2LC, 2/2RC, p6, 2/2RPC, p2, rpt from * to 1 st before m, pfb, slm] three times, p2, (2/2RC) twice, p2

Row 2 & all remaining WS rows: knit the k sts & purl the p sts (the pfb on RS are worked as k on WS)

Row 3: [p2, k2, 2/2LC, k2, p2, slm, pfb, p1, *p4, 2/2LPC, p2, 2/2RPC, 2/2RC, 2/2LPC, p2, 2/2RPC, p4, rpt from * to 2 sts before m, p1, pfb, slm] three times, p2, k2, 2/2LC, k2, p2

Row 5: [p2, (2/2RC) twice, p2, slm, pfb, p2, *p6, (k2, p2) twice, k4, (p2, k2) twice, p6, rpt from * to 3 sts before m, p2, pfb, slm] three times, p2, (2/2RC) twice, p2

Row 7: [2/2RPC, 2/2LC, 2/2LPC, slm, pfb, p3, *p4, 2/2RPC, p2, 2/2LPC, 2/2RC, 2/2RPC, p2, 2/2LPC, p4, rpt from * to 4 sts before m, p3, pfb, slm] three times, 2/2RPC, 2/2LC, 2/2LPC

Row 9: [k2, 2/2RPC, 2/2LPC, k2, slm, pfb, k2, p2, *p2, 2/2RPC, p6, 2/2RPC, 2/2LPC, p6, 2/2LPC, p2, rpt from * to 5 sts before m, p2, k2, pfb, slm] three times, k2, 2/2RPC, 2/2LPC, k2

Row 11: [2/2RC, p4, 2/2RC, slm, pfb, p1, *2/2LC, 2/2RC, p6, 2/2RPC, p4, 2/2LPC, p6, rpt from * to 10 sts before m, 2/2LC, 2/2RC, p1, pfb, slm] three times, 2/2RC, p4, 2/2RC

Row 13: [k4, p4, k4, slm, pfb, *2/2RPC, 2/2RC, 2/2LPC, p2, 2/2RPC, p8, 2/2LPC, p2, rpt from * to 13 sts before m, 2/2RPC, 2/2RC, 2/2LPC, pfb, slm] three times, k4, p4, k4

Row 15: [2/2RC, p4, 2/2RC, slm, pfb, p1, *k2, p2, k4, (p2, k2) twice, p12, k2, p2 rpt from * to 14 sts before m, k2, p2, k4, p2, k2, p1, pfb, slm] three times, 2/2RC, p4, 2/2RC

Row 17: [k2, 2/2LPC, 2/2RPC, k2, slm, pfb, p2, *2/2LPC, 2/2RC, 2/2RPC, p2, 2/2LPC, p8, 2/2RPC, p2, rpt from * to 15 sts before m, 2/2LPC, 2/2RC, 2/2RPC, p2, pfb, slm] three times, k2, 2/2LPC, 2/2RPC, k2

Row 19: [2/2LPC, 2/2LC, 2/2RPC, slm, pfb, p3, *p2, 2/2RPC, 2/2LPC, p6, 2/2LPC, p4, 2/2RPC, p4, rpt from * to 16 sts before m, p2, 2/2RPC, 2/2LPC, p5, pfb, slm] three times, 2/2LPC, 2/2LC, 2/2RPC

Row 21: [p2, (2/2RC) twice, p2, slm, pfb, p3, pfb, *2/2RPC, p4, 2/2LPC, p6, 2/2LC, 2/2RC, p6, rpt from * to 17 sts before m, 2/2RPC, p4, 2/2LPC, pfb, p3, pfb, slm] three times, p2, (2/2RC) twice, p2

Row 23: [p2, k2, 2/2LC, k2, p2, slm, pfb, p4, *2/2RPC, p8, 2/2LPC, p2, 2/2RPC, 2/2RC, 2/2LPC, p2, rpt from * to 21 sts before m, 2/2RPC, p8, 2/2LPC, p4, pfb, slm] three times, p2, k2, 2/2LC, k2, p2

Row 25: [p2, (2/2RC) twice, p2, slm, pfb, p5, *k2, p12, (k2, p2) twice, k4, p2, k2, p2, rpt from * to 22 sts before m, k2, p12, k2, p5, pfb, slm] three times, p2, (2/2RC) twice, p2

Row 27: [2/2RPC, 2/2LC, 2/2LPC, slm, pfb, p6, *2/2LPC, p8, 2/2RPC, p2, 2/2LPC, 2/2RC, 2/2RPC, p2, rpt from * to 23 sts before m, 2/2LPC, p8, 2/2RPC, p6, pfb, slm] three times, 2/2RPC, 2/2LC, 2/2LPC

Row 29: [k2, 2/2RPC, 2/2LPC, k2, slm, pfb, p1, k2, p4, *p2, 2/2LPC, p4, 2/2RPC, p6, 2/2RPC, 2/2LPC, p4, rpt from * to 24 sts before m, p2, 2/2LPC, p4, 2/2RPC, p6, k2, p1, pfb, slm] three times, k2, 2/2RPC, 2/2LPC, k2

Row 31: [2/2RC, p4, 2/2RC, slm, pfb, *p2, 2/2LPC, p6, 2/2LC, 2/2RC, p6, 2/2RPC, p2, rpt from * to 1 st before m, pfb, slm] three times, 2/2RC, p4, 2/2RC

Row 33: [k4, p4, k4, slm, pfb, p1, *p4, 2/2LPC, p2, 2/2RPC, 2/2RC, 2/2LPC, p2, 2/2RPC, p4, rpt from * to 2 sts before m, p1, pfb, slm] three times, k4, p4, k4

Row 35: [2/2RC, p4, 2/2RC, slm, pfb, p2, *p6, (k2, p2) twice, k4, (p2, k2) twice, p6, rpt from * to 3 sts before m, p2, pfb, slm] three times, 2/2RC, p4, 2/2RC

Row 37: [k2, 2/2LPC, 2/2RPC, k2, slm, pfb, p3, *p4, 2/2RPC, p2, 2/2LPC, 2/2RC, 2/2RPC, p2, 2/2LPC, p4, rpt from * to 4 sts before m, p3, pfb, slm] three times, k2, 2/2LPC, 2/2RPC, k2

Row 39: [2/2LPC, 2/2LC, 2/2RPC, slm, pfb, k2, p2, *p2, 2/2RPC, p6, 2/2RPC, 2/2LPC, p6, 2/2LPC, p2, rpt from * to 5 sts before m, p2, k2, pfb, slm] three times, 2/2LPC, 2/2LC, 2/2RPC

Row 41: [p2, (2/2RC) twice, p2, slm, pfb, p1, *2/2LC, 2/2RC, p6, 2/2RPC, p4, 2/2LPC, p6, rpt from * to 10 sts before m, 2/2LC, 2/2RC, p1, pfb, slm] three times, p2, (2/2RC) twice, p2

Row 43: [p2, k2, 2/2LC, k2, p2, slm, pfb, *2/2RPC, 2/2RC, 2/2LPC, p2, 2/2RPC, p8, 2/2LPC, p2, rpt from * to 13 sts before m, 2/2RPC, 2/2RC, 2/2LPC, pfb, slm] three times, p2, k2, 2/2LC, k2, p2

Row 45: [p2, (2/2RC) twice, p2, slm, pfb, p1, *k2, p2, k4, (p2, k2) twice, p12, k2, p2, rpt from * to 14 sts before m, k2, p2, k4, p2, k2, p1, pfb, slm] three times, p2, (2/2RC) twice, p2

Row 47: [2/2RPC, 2/2LC, 2/2LPC, slm, pfb, p2, *2/2LPC, 2/2RC, 2/2RPC, p2, 2/2LPC, p8, 2/2RPC, p2, rpt from * to 15 sts before m, 2/2LPC, 2/2RC, 2/2RPC, p2, pfb, slm] three times, 2/2RPC, 2/2LC, 2/2LPC

Row 49: [k2, 2/2RPC, 2/2LPC, k2, slm, pfb, p3, *p2, 2/2RPC, 2/2LPC, p6, 2/2LPC, p4, 2/2RPC, p4, rpt from * to 16 sts before m, p2, 2/2RPC, 2/2LPC, p5, pfb, slm] three times, k2, 2/2RPC, 2/2LPC, k2

Row 51: [2/2RC, p4, 2/2RC, slm, pfb, p3, pfb, *2/2RPC, p4, 2/2LPC, p6, 2/2LC, 2/2RC, p6, rpt from * to 17 sts before m, 2/2RPC, p4, 2/2LPC, pfb, p3, pfb, slm] three times, 2/2RC, p4, 2/2RC

Row 53: [k4, p4, k4, slm, pfb, p4, *2/2RPC, p8, 2/2LPC, p2, 2/2RPC, 2/2RC, 2/2LPC, p2, rpt from * to 21 sts before m, 2/2RPC, p8, 2/2LPC, p4, pfb, slm] three times, k4, p4, k4

Row 55: [2/2RC, p4, 2/2RC, slm, pfb, p5, *k2, p12, (k2, p2) twice, k4, p2, k2, p2, rpt from * to 22 sts before m, k2, p12, k2, p5, pfb, slm] three times, 2/2RC, p4, 2/2RC

Row 57: [k2, 2/2LPC, 2/2RPC, k2, slm, pfb, p6, *2/2LPC, p8, 2/2RPC, p2, 2/2LPC, 2/2RC, 2/2RPC, p2, rpt from * to 23 sts before m, 2/2LPC, p8, 2/2RPC, p6, pfb, slm] three times, k2, 2/2LPC, 2/2RPC, k2

Row 59: [2/2LPC, 2/2LC, 2/2RPC, slm, pfb, p1, k2, p4, *p2, 2/2LPC, p4, 2/2RPC, p6, 2/2RPC, 2/2LPC p4, rpt from * to 24 sts before m, p2, 2/2LPC, p4, 2/2RPC, p6, k2, p1, pfb, slm] three times, 2/2LPC, 2/2LC, 2/2RPC (342 sts)

These 60 rows form the pattern rpt, (each full rpt of 60 rows adding 192 sts). Work as many times as desired ending after any multiple of 10 rows. In my sample I worked rows 1 – 60 of main pattern & then rows 1 - 50.

Work i-cord BO as follows (my i-cord used about 35 yd, but you might want to allow more to be safe):

CO 3 sts, *k2, k2togtbl, put the 3 sts on right needle back to left needle & rpt from * until all sts are used. k3tog & fasten off yarn weaving in end. Block into a semi circle shape & enjoy. :)

INSTRUCTIONS FOR CHARTS (NB main chart rows 31 – 60 show 2 rpts in blue area):

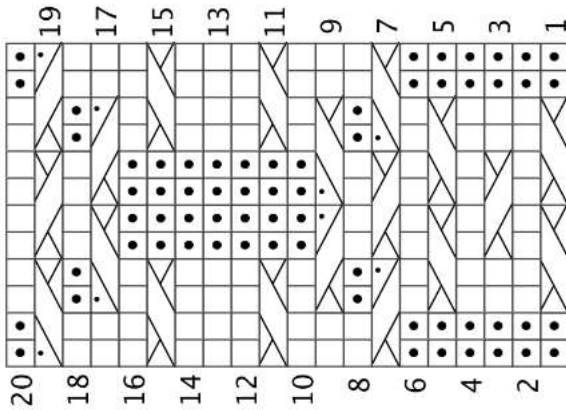
After cable tab CO & set up row (page 3), work the Set Up chart with cable panel once (20 rows) in the following order across the shawl: (Cable Panel pattern, Set Up pattern) 3 times, Cable Panel pattern. 6 incs are made every RS row (150 sts).

Work the main chart with cable panels in the following order across the shawl:

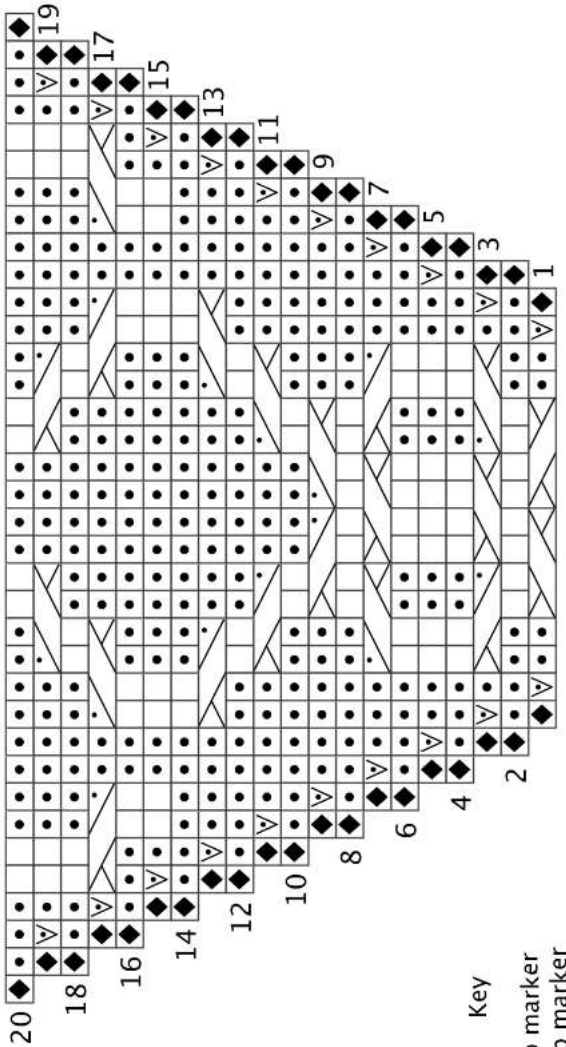
(Cable Panel pattern, Main pattern) 3 times, Cable Panel pattern. 6 incs are made every RS row. **Note there are 12 increases on rows 21 & 51. (after 1 repeat, 342 sts).** Repeat chart as desired, ending after row 20, 40 or 60. Work i-cord BO & then block (see above).

CHARTS

CABLE PANEL



SET UP



Key

◆ RS: slip marker
 WS: slip marker

□ RS: knit
 WS: purl

• RS: purl
 WS: knit

▽ RS: purl into front, back

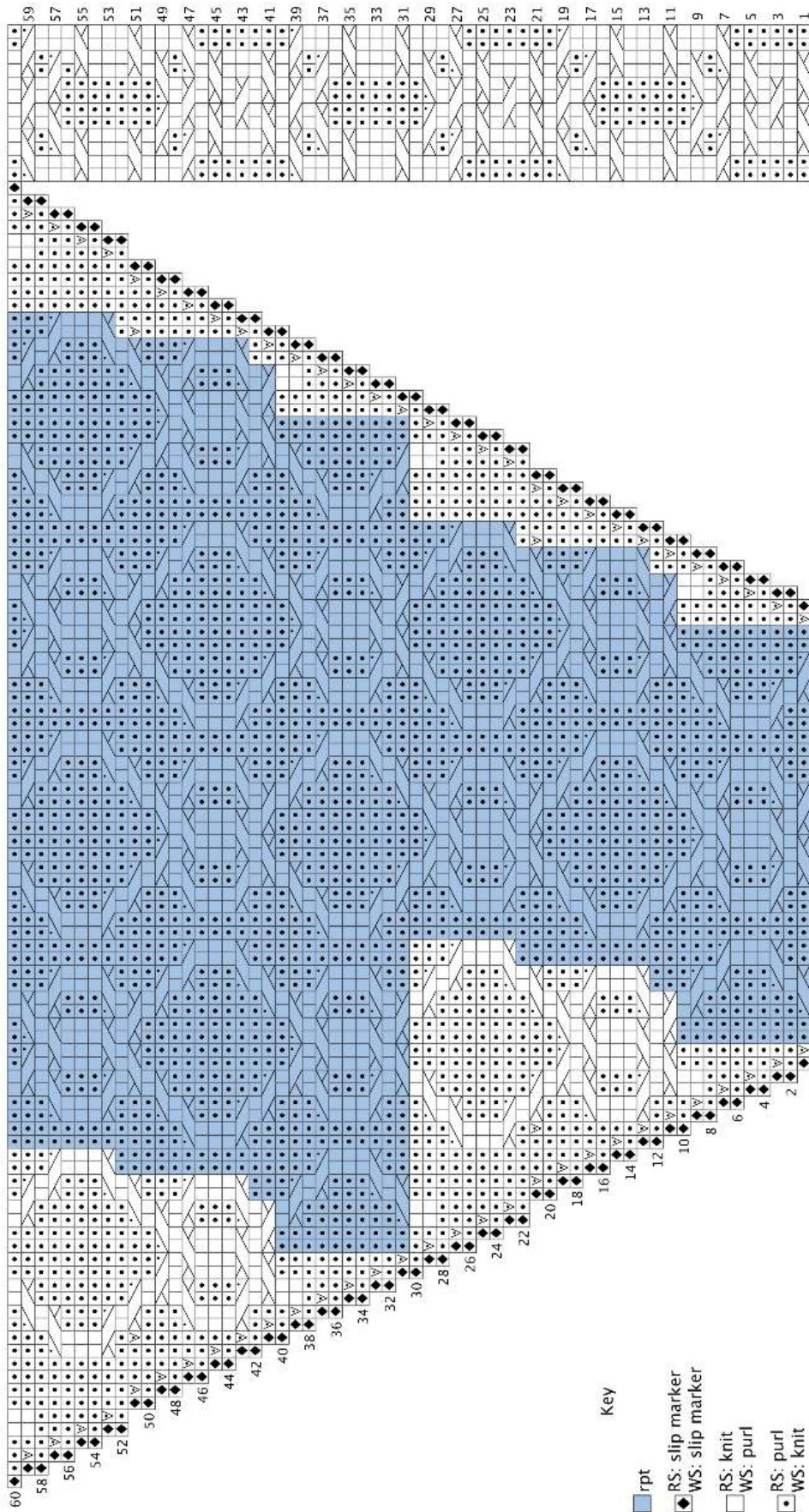
RS: 2/2 LC

RS: 2/2 RC

RS: 2/2 LPC

RS: 2/2 RPC

MAIN PATTERN





SPACE FOR NOTES:

p/hop is pennies per hour of pleasure, so please feel free to use this pattern, then donate what you think it was worth to you to MSF.

MSF is an independent humanitarian medical aid organisation, committed to providing medical aid wherever it is needed, regardless of race, religion, politics or gender. We currently work in over 60 countries helping victims of war, natural disasters, disease epidemics and those who simply have no access to even basic healthcare. For more info, please visit www.msf.org.uk

To donate or find out more about p/hop, please visit the p/hop blog at www.p-hop.co.uk.

Thank you for supporting MSF!