

This design has been kindly donated to Médecins Sans Frontières as part of the p/hop project. p/hop = pennies per hours of pleasure. Please use this knitting pattern and in return donate what you think it was worth to MSF.

To find out more and donate visit www.p-hop.co.uk

Find out more about MSF at www.msf.org.uk/phop

Thank you for supporting MSF! Happy Knitting!



Blodeuwedd

BY SUE LAZENBY



Blodeuwedd: blod-EYE-weth (the "eye" like your eyes; the "th" like in "the")

Inspired by tales of the mythical woman made of flowers in Welsh legend, Blodeuwedd (flower face) is a three quarter circular shawl with plenty to drape around you should the spring and early summer weather prove chilly. The body of the shawl is strewn with flower petals in sections divided by cabled panels which are echoed in the cabled edges. One of the plants she was associated with was the bean and the cables draw inspiration from this. The border is a more intricate pattern symbolising the heads of Meadowsweet another of her plants and one I'm very fond of for its hay scent. Wrap yourself in Blodeuwedd and be carried away on a breeze of flowers into the summer. It is an interesting, but not difficult knit for the intermediate knitter.

Finished Measurements Width: approx. 69" / 175 cm along top edge (56" / 142 cm across width as laid out in blocking diagram) Depth: approx. 29" / 74 cm

Materials Fingering weight yarn, 437 yd / 400 m per 100g. Preferably silk or a silk blend.

Approx. 840 – 940 yd / 768 – 860 m.

- ⤴ US # 6 / 4.0 mm 40" / 100 cm circular needle or size to achieve desired gauge. Needle size is a recommendation only.
- ⤴ US # 7 / 4.5 mm needle or one size larger than main needle for BO.
- ⤴ Beads (optional): approx. 256 size 5 triangular (2 x 10g) or 6 seed beads (3 x 9g).
- ⤴ waste yarn for provisional CO; 8 stitch markers; cable needle; blocking wires & pins

Gauge 23 sts / 36 rows = 4" / 10 cm. Measured over main lace pattern, using fingering weight on 4mm needles before blocking.

21 sts / 24 rows = 4" / 10 cm. Measured over main lace pattern, using fingering weight on 4 mm needles after blocking.

Gauge is not critical and is a personal choice depending on chosen yarn, although this may change overall measurements.

Abbreviations

BO: bind off

CO: cast on

C3B: cross 3 back: slip next st purlwise on cable needle, leave at back, knit 2 sts, knit st from cable needle.

C4B: cable 4 back: slip next 2 sts purlwise on cable needle, leave at back, knit 2 sts, knit sts from cable needle.

inc(s): increase(s)

k: knit

k2tog: knit 2 together. (right leaning decrease)

kfb: knit into front and back of st (increase)

ktbl: knit through back loop

M1: knit into back of loop between sts

M1L: make 1 st leaning left: insert right needle into bar between sts from front to back; place st on left needle with leading leg in front, knit into the back of st, twisting it.

M1R: make 1 st leaning right: insert right needle into bar between sts from front to back; place st on left needle with leading leg at back, knit into the front of st, twisting it.


m: marker

p: purl

p2tog: purl 2 sts together

p2togtbl: purl 2 sts together through back of loop

p3tog: purl 3 sts together

 : place bead (optional). Work stitch then add bead

pm: place marker

rpt: repeat

RS: right side

slm: slip marker

st(s): stitches

ssk: slip two sts knitwise, knit the two sts together (left leaning decrease).

sk2psso: slip one, knit two together, pass slip st over.

s2kp2sso: slip 2 sts, k1, pass 2 slip sts over (centred decrease).

WS: wrong side

YO: yarn over

Pattern notes

Blodeuwedd is worked from the top down, starting with a provisional CO, with 8 increases every RS row, 2 at each side (cabled) edge and 2 either side of 3 cable panels to form a three quarter circle shape. A transition pattern is worked before continuing with the border pattern. Please note there is patterning on WS as well as RS rows, although there are rows with no pattern as well.

Directions

Using waste yarn and provisional CO of your choice, CO 5 sts. Work 31 rows in stocking st with a 1 st edge in garter (RS row 1 knit, row 2 purl to last st k1) & working RS rows 5, 11, 17, 23 & 29 as k1, C4B. Turn 90 degrees, pick up and knit 16 sts along edge (the knit edge rather than the one st garter edge), taking sts from just inside cables on those rows, turn 90 degrees and knit 5 sts from CO (**26 sts**).

SET UP SECTION:

Row 1 (WS): k1, p4, *pm, p1, pm, p4, rpt from * to last st, k1 (there are 5 edge sts at each side).

Row 2 (RS): k5, *slm, M1L, k1, M1R, slm, k4, rpt from * to last st, k1 (8 incs, **34 sts**)

Row 3: k1, purl to last st, k1, slipping markers as they are reached

Row 4: k1, C4B, *slm, M1L, k3, M1R, slm, C4B, rpt from * to last st, k1 (8 incs, **42 sts**)

Row 5: as row 3

Row 6: k5, *slm, M1L, k5, M1R, slm, k4, rpt from * to last st, k1 (8 incs, **50 sts**)

Row 7: as row 3

START LACE PATTERN WITH 3 x 4st CABLED PANELS & 5 st EDGES (note that increases into a YO of previous row are worked kfb.) The stitch rpt for subsequent pattern rpts are shown * to *. The section rpts are shown ** to **.

Row 1 (RS): k1, **k4, slm, M1L, *k1, YO, ssk, k1, k2tog, YO*, k1, M1R, slm** work from ** to ** 4 times, k5

Row 2: k1, **p4, slm, p2, *p1, YO, p3tog, YO, p2,* p1, slm** work from ** to ** 4 times, p4, k1

Row 3: k1, **C4B, slm, M1L, *knit to m,* M1R, slm** work from ** to ** 4 times, C4B, k1

Row 4: k1, **p4, slm, YO, p2tog, p1, *p2togtbl, YO, p1, YO, p2tog, p1,* p2togtbl, YO, slm** work ** to ** 4 times, p4, k1

Row 5: k1, **k4, slm, kfb, YO, *sk2pssso, YO, k3, YO, * sk2pssso, YO, kfb, slm** work from ** to ** 4 times, k5

Row 6: k1, purl to last st, slipping markers as they are reached, k1

Row 7: k1, **k4, slm, M1L, k1, k2tog, YO, *k1, YO, ssk, k1, k2tog, YO* rpt from * to* to 4 sts before m, k1, YO, ssk, k1, M1R, slm** work from ** to ** 4 times, k5

Row 8: k1, **p4, slm, YO, p3tog, YO, p2, *p1, YO, p3tog, YO, p2* rpt from * to * to 4 sts before m, p1, YO, p3tog, YO, slm** work from ** to ** 4 times, p4, k1

Row 9: k1, C4B, **kfb, knit to one st before m, kfb, slm, C4B, slm** work from ** to ** 2 more times. Work from ** to ** once more, but ending with slm, C4B, k1

Row 10: k1, p4, slm, ** p2togtbl, YO, p1, YO, p2tog, p1 *p2togtbl, YO, p1, YO, p2tog, p1* rpt from * to * to 5 sts before m, p2togtbl, YO, p1, YO, p2tog, slm, p4** work from ** to ** 4 times, k1

Row 11: k1, **k4, slm, M1L, k4, YO, *sk2pssso, YO, k3, YO* rpt from * to * to 7 sts before m, sk2pssso, YO, k4, M1R, slm.** work from ** to ** 4 times, k5

Row 12: as row 6 (48 incs. **19 sts in each lace section, 98 sts total**)

These 12 rows form the repeat, each repeat increases 48sts in total. Work 8 MORE times (**9 TIMES IN TOTAL, 115 sts in each lace section, 482 sts total**)

Continue with the transition section.

TRANSITION SECTION: (note that from row 1 onwards the stitch markers are moved into the cable panels and edges in stages – highlighted in bold. I've used the term 're-site m' where the marker needs to be removed a stitch ahead and re-sited back a stitch, otherwise I've said to remove marker when it's reached and then to pm in the new position.)

Row 1: k2, ** k2, **re-site m**, M1L, k1, *k1, YO, ssk, k1, k2tog, YO* rpt from * to * to 1 st before m, k1, **remove m**, k1, M1R, **pm**** work from ** to ** 4 times, k4

Row 2: k1, p1, **p2, slm, p3,*p1, YO, p3tog, YO, p2* rpt from * to * to 2 sts before m, p2, slm** work from ** to ** 4 times, p3, k1

Row 3: k1, C3B, **slm, M1L, knit to m, M1R, slm, k2** work from ** to ** 3 times. Work from ** to ** once more, but end with slm, C3B, k1

Row 4: k1, p1, **p2, slm, p1, YO, p2tog, p1, *p2togtbl, YO, p1, YO, p2tog, p1* rpt from * to * to 3 sts before m, p2togtbl, YO, p1, slm** work from ** to ** 4 times, p3, k1

Row 5: k2, **k2, slm, M1L, k2, YO, *sk2pssso, YO, k3, YO* rpt from * to * to 5 sts before m, sk2pssso, YO, k2, M1R, slm** work from ** to ** 4 times, k4

Row 6: k1, purl to last st, slipping markers as reached, k1

Row 7: k3, **re-site m**, **YO, ssk, k1 * k2tog, YO, ktbl, YO, ssk, k1* rpt from * to * to 1 st before m, **remove markers on cable bands as reached & do not replace**, k2tog, YO, **M1**** work from ** to ** 2 more times. Work from ** to ** once more, but end with **remove m**, k2tog, YO, **pm**, k3

FROM NOW ON YOU WILL BE WORKING ACROSS ALL STS FROM ONE SIDE EDGE TO THE OTHER (JUST 2 ST MARKERS, ONE AT EACH EDGE)

Row 8: as row 6

Row 9: k2, **re-site m**, YO, ktbl, YO, ssk, k1, *k2tog, YO, ktbl, YO, ssk, k1* rpt from * to * to 2 sts before m, k2tog, **remove m**, YO, ktbl, YO, **pm**, k2

Row 10: as row 6 (511 sts)

Continue with Border.

BORDER:

Row 1 (RS): k1, **re-site m**, [YO, ktbl] 4 times, YO, *s2kp2sso, [YO, ktbl] 3 times, YO* rpt from * to * to m, **remove m**, ktbl, YO, **pm**, k1

Row 2: k1, slm, purl to m, slm, k1

Row 3: k1, slm, YO, *s2kp2sso, YO, k2tog, YO, ktbl, YO, ssk, YO* rpt from * to * to 3 sts before m, s2kp2sso, YO, slm, k1

Row 4: as row 2

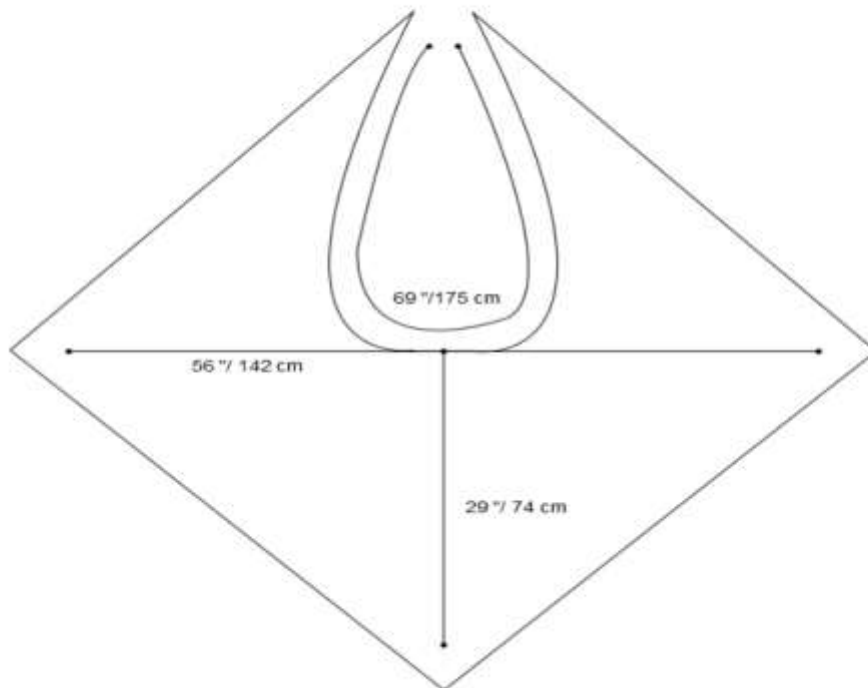
Row 5: k1, slm, k1, YO, *ktbl, YO, ssk, YO, s2kp2sso, YO, k2tog, YO* rpt from * to * to 2 sts before m, ktbl, YO, k1, slm, k1

Row 6: k1, slm, YO, p2tog, p1, *p2togtbl, YO, p3, YO, p2tog, p1* rpt from * to * to 2 sts before m, p2togtbl, YO, slm, k1

Row 7: k1, slm, k1, YO, *s2kp2sso, YO, k1, YO, s2kp2sso, YO, k1, YO* rpt from * to * 4 sts before m, s2kp2sso, YO, k1, slm, k1

WS: BO purlwise on WS using a size larger needle, especially if using a yarn with little 'give' like silk. I use the p2tog, place back on left needle & repeat method, but any loose BO will be suitable.

Block & enjoy. :)



NOTE
S FOR
BODY,
TRAN
SITIO
N &
BORD
ER
CHAR
TS ON
FOLL
OWIN
G
PAGES
 :

BODY
SET

UP CHART: WORK ONCE (50 sts TOTAL)

BODY CHART: WORK 9 TIMES IN TOTAL (115 sts IN EACH LACE SECTION, 482 sts TOTAL)

WORK TRANSITION CHART ONCE REPEATING THE PURPLE AREA ACROSS THE FOLLOWING 2 SHAWL SECTIONS, THEN WHITE PART OF CHART FOR 4th SECTION & EDGE. NOTE THE RED STITCH, WHICH IS WITHIN THE SECTION REPEAT AND WHICH SHOWS THE M1 AT CENTER OF THE CABLE PANELS AFTER REMOVING THE STITCH MARKERS. NOTE ALSO THAT THE MARKERS MOVE 1 STITCH INTO EDGE & PANELS ON ROWS 1, 7 & 9 (511 sts TOTAL)

WORK THE BORDER CHART ONCE. NOTE THAT THE 2 REMAINING MARKERS MOVE 1 STITCH INTO EDGE ON ROW 1

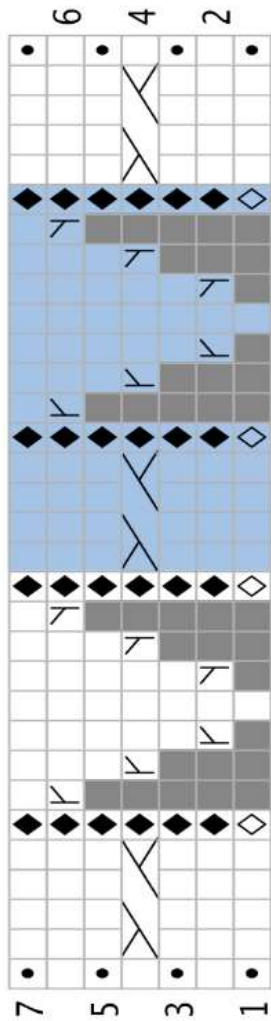
Note: BO purlwise on WS using a size larger needle, especially if using a yarn with little 'give' like silk. I use the p2tog, place back on left needle & repeat method, but any loose BO will be suitable.

Block & enjoy. :)

Blodeuwedd

CHARTS

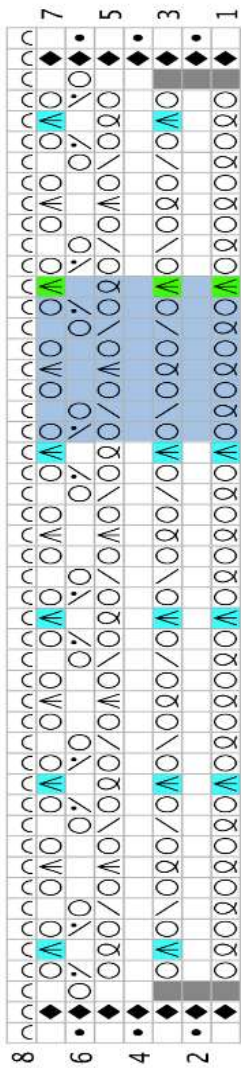
BODY SET UP (WORK ONCE, 50 STS)



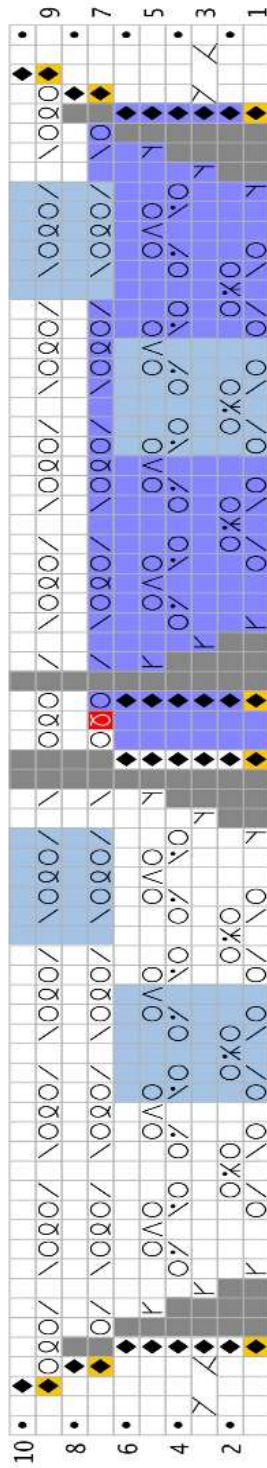
KEY FOR ALL CHARTS

- no stitch
- section repeat
- pattern repeat
- bead
- bead within repeat
- increase stitch at centre of cable panel (within section repeat)
- RS: place marker
- RS: slip marker
WS: slip marker
- move marker
- RS: knit
WS: purl
- WS: knit
- RS: ktbl
- RS: yo
WS: yo
- RS: M1L
- RS: M1R
- RS: knit into fb
- RS: M1: k into back of loop between sts
- RS: ssk
- RS: k2tog
- RS: sk2pssso
- s2kp2sso (centred decrease)
- WS: p2togtbl
- WS: p2tog
- WS: p3tog
- RS: C4B
- RS: C3B
- WS: bind off purlwise (see note)

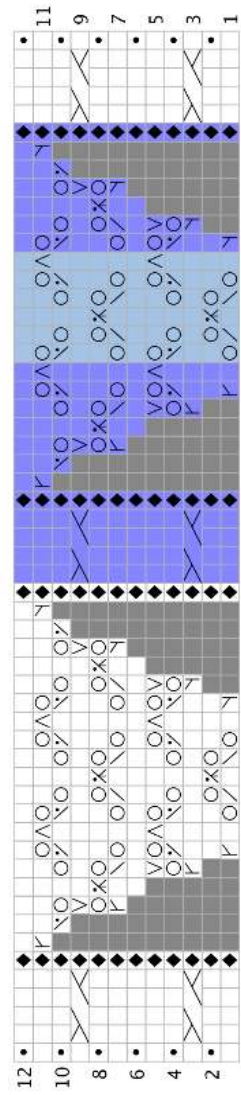
BLODEUWEDD BORDER



BLODEUWEDD TRANSITION note markers move 1 st into edges & bands on rows 1, 7 & 9



BLODEUWEDD BODY CHART (WORK 9 TIMES, 482 sts)



p/hop is pennies per hour of pleasure, so please feel free to use this pattern, then donate what you think it was worth to you to MSF.

MSF is an independent humanitarian medical aid organisation, committed to providing medical aid wherever it is needed, regardless of race, religion, politics or gender. We currently work in over 60 countries helping victims of war, natural disasters, disease epidemics and those who simply have no access to even basic healthcare. For more info, please visit www.msf.org.uk

To donate or find out more about p/hop, please visit the p/hop blog at www.p-hop.co.uk.

Thank you for supporting MSF!