

This design has been kindly donated to Médecins Sans Frontières as part of the p/hop project. p/hop = pennies per hours of pleasure. Please use this knitting pattern and in return donate what you think it was worth to MSF.

To find out more and donate visit [www.p-hop.co.uk](http://www.p-hop.co.uk)

Find out more about MSF at [www.msf.org.uk/phop](http://www.msf.org.uk/phop)

Thank you for supporting MSF! Happy Knitting!



## Rhiannon

BY SUE LAZENBY



**VERSION B (LARGE)**

Rhiannon is pronounced Hree-AN-on (the "RH" is rolled like in Spanish "roho" but has a great deal more of the H sound in it than just R). She was a Celtic moon goddess and is linked to Epona in Gallo-Roman religion and seen as a protector of horses, often riding a white horse & dressed in golden robes. After being falsely accused of killing her child, she was condemned to stand by the castle gates carrying passers by on her back. I was inspired by Celtic tracery, the grid work on gates & pattern of horse shoes. This is a top down triangular shawl in two sizes (the large with a lace border) which makes a cosy wrap whether or not you're on horseback. The variety of patterns create an interesting knit for the intermediate knitter.

## Finished Measurements

**Version A heavy lace - fingering:** Width: approx. 47" - 50" / 119 - 127 cm. Depth: approx. 21" - 22" / 53 - 56 cm.

**Version B heavy lace (fingering):** Width: approx. 56" (63") / 142 (160) cm. Depth: approx. 26" (30") / 66 (76) cm

**Materials** Heavy lace to fingering weight yarn, 420 yd / 384 m - 545 yd / 498 m per 100 g. Preferably all wool or a wool blend.

**Yarn: Version A:** Approx. 530 - 550 yd / 485 - 503 m (shown in heavy lace weight).

**Version B:** Approx. 735 - 885 yd / 672 - 809 m (shown in fingering weight yarn). This version could also be worked in 2 toning colours / shades using 100g each.

**Needles:** 2 x 40" / 100 cm circular. Heavy lace weight / 3ply [fingering]:

US # 5 / 3.75 mm [US # 6 / 4.0 mm] or size to achieve desired gauge & US # 6 / 4.0 mm [US # 7 / 4.5 mm] or one size larger than main needle. The larger size needle is used for the smocked sections – including cable centre.

Needle size is a recommendation only.

Waste yarn (& crochet hook if required) for provisional CO; cable needle (even if generally working cables without – see pattern notes); 4 stitch markers; blocking wires & pins

**Gauge** 4" / 10 cm, measured over garter stitch: Heavy lace weight on 3.75 mm needles before blocking: 25 sts / 46 rows; after blocking: 23 sts / 40 rows. Fingering weight on 4 mm needles before blocking: 24 sts / 46 rows; after blocking: 22 sts / 38 rows

Gauge is not critical and is a personal choice depending on chosen yarn, although this may change overall measurements.

## Abbreviations

**1/ILC:** RS: ktbl in 2<sup>nd</sup> st, k 1<sup>st</sup> st, slip both sts off left needle together

WS: sl 1 to cn, hold at front, p1, p1 from cn (or turn work & work sts from RS)

**1/IRC:** RS: k2tog leaving sts on needle, k 1<sup>st</sup> st again, slip both off left needle together

WS: sl 1 to cn, hold at back, p1, p1 from cn (or turn work & work sts from RS)

**1/ILPC:** sl next st to cn, hold to front, p1, k1 from cn

**1/IRPC:** sl next st to cn, hold to back, k1, p1 from cn

**2/ILPC:** sl 2 to cn, hold to front, p1, k2 from cn

**2/IRPC:** sl 1 to cn, hold to back, k2, p1 from cn

**3/ILPC:** sl next 3 sts to cn, hold to front, p1, k3 from cn

**3/IRPC:** sl next st to cn, hold to back, k3, p1 from cn

**3/3LC:** sl next 3 sts to cn, hold to front, k3, k3 from cn

**BO:** bind off

**CO:** cast on

**cn:** cable needle

**inc(s):** increase(s)

**k:** knit

**k2tog:** knit 2 sts together

**kfb:** knit into front & back (inc one)

**m:** marker

**p2tog:** purl 2 sts together

**M1L:** make 1 st leaning left: insert right needle into bar between sts from front to back; place st on left needle with leading leg in front, knit into the back of st, twisting it.

**M1R:** make 1 st leaning right: insert right needle into bar between sts from front to back; place st on left needle with leading leg at back, knit into the front of st, twisting it.

**p:** purl

**pm:** place marker

**rpt:** repeat

**RS:** right side

**s2kp2sso:** slip one, knit two together, pass slip st over (double decrease)

**sl:** slip

**slm:** slip marker

**ssk:** slip two sts knitwise, knit the two sts together (left leaning decrease)

**sts:** stitches

**T5:** Tie 5: place 5 sts on cn, tie yarn around sts twice (from back first), k1, p3, k1 (see pattern notes)

**tbl:** through back of loop

**WS:** wrong side

**YO:** yarn over

## Pattern notes

Rhiannon is worked from the top down, starting with a provisional CO and a 3 st garter tab. 4 sts are increased every RS row, 2 inside the 3 st garter edges & 1 at each side of the centre panel. The directional increases are angled towards the centre panel for neatness. The centre panel is worked in cables on a reversed stocking st ground (note that there are cables on 3 WS rows in each rpt). Either side of the panel, garter st areas are intersected by bands of smocked honeycomb. Version A ends with a garter band across all sts, whereas version B continues with a garter section either side of centre panel and ends with a horse shoe patterned border. A 3 st garter edging is maintained throughout. For version B, I alternated the 2 skeins of yarn (labelled A & B as noted in each section).

**Note:** for the T5 (Tie 5) stitch you will need a cable needle, even if working the rest of the cables without.

Here is a video clip showing how to work it: [http://youtu.be/\\_QwH6iFBz0g](http://youtu.be/_QwH6iFBz0g)

## Directions

For the fingering version (needing more than one skein) or if wanting to use 2 shades, refer to use of yarn A or B at the start of each section.

**USING SMALLER SIZE NEEDLE** (yarn A if working 2 colours): provisionally CO 3 sts using waste yarn. Knit 49 rows, turn work 90 degrees & pick up & knit 24 sts from the purl bumps. Knit 3 from CO. (30 sts)

**Set up row (WS):** k3, pm, k1, pm, p2, k6, p6, k6, p2, pm, k1, pm, k3

### **FOR BOTH VERSIONS:**

**SECTION 1, USING SMALLER NEEDLE WORK IN GARTER ST WITH CENTRE PANEL (64 rows) (yarn A if working 2 colours):**

**Row 1 (RS):** k3, \*slm, M1L, knit to m, M1L, slm,\*\* 1/1RC, p6, k6, p6, 1/1RC, rpt from \* to \*\* (changing both incs to M1R) to last 3 sts, k3

**Row 2 (& all WS rows except 12, 16 & 20):** k3, \*slm, knit to m, slm,\*\* k all k sts & p all p sts in centre panel, rpt from \* to \*\* to last 3 sts, k3

**Row 3:** k3, \*slm, M1L, knit to m, M1L, slm,\*\* 1/1RC, p5, 3/1RPC, 3/1LPC, p5, 1/1RC, rpt from \* to \*\* (changing both incs to M1R) to last 3 sts, K3

**Row 5:** k3, \*slm, M1L, knit to m, M1L, slm,\*\* 1/1RC, p4, 3/1RPC, p2, 3/1LPC, p4, 1/1RC, rpt from \* to \*\* (changing both incs to M1R) to last 3 sts, k3

**Row 7:** k3, \*slm, M1L, knit to m, M1L, slm,\*\* 1/1RC, p3, 2/1RPC, k1, p4, k1, 2/1LPC, p3, 1/1RC, rpt from \* to \*\* (changing both incs to M1R) to last 3 sts, k3

**Row 9:** k3, \*slm, M1L, knit to m, M1L, slm,\*\* 1/1RC, p2, 2/1RPC, p1, 1/1LPC, p2, 1/1RPC, p1, 2/1LPC, p2, 1/1RC, rpt from \* to \*\* (changing both incs to M1R) to last 3 sts, k3

**Row 11:** k3, \*slm, M1L, knit to m, M1L, slm,\*\* 1/1RC, p1, 1/1RPC, k1, p3, 1/1LPC, 1/1RPC, p3, k1, 1/1LPC, p1, 1/1RC, rpt from \* to \*\* (changing both incs to M1R) to last 3 sts, k3

**ROW 12 (WS):** k3, \*slm, knit to m, slm,\*\* p2, [k1, p1] twice, k4, 1/1LC, k4, [p1, k1] twice, p2, rpt from \* to \*\* to last 3 sts, k3

**Row 13:** k3, \*slm, M1L, knit to m, M1L, slm,\*\* 1/1RC, 1/1RPC, p1, [1/1LPC, p2, 1/1RPC] twice, p1, 1/1LPC, 1/1RC, rpt from \* to \*\* (changing both incs to M1R) to last 3 sts, k3

**Row 15:** k3, \*slm, M1L, knit to m, M1L, slm,\*\* 1/1RC, k1, p3, [1/1LPC, 1/1RPC, p2] twice, p1, k1, 1/1RC, rpt from \* to \*\* (changing both incs to M1R) to last 3 sts, k3

**ROW 16 (WS):** k3, \*slm, knit to m, slm,\*\* p3, k4, [1/1RC, k4] twice, p3, rpt from \* to \*\* to last 3 sts, k3

**Row 17:** k3, \*slm, M1L, knit to m, M1L, slm,\*\* 1/1RC, k1, p3, [1/1RPC, 1/1LPC, p2] twice, p1, k1, 1/1RC, rpt from \* to \*\* (changing both incs to M1R) to last 3 sts, k3

**Row 19:** k3, \*slm, M1L, knit to m, M1L, slm,\*\* 1/1RC, 1/1LPC, p1, [1/1RPC, p2, 1/1LPC] twice, p1, 1/1RPC, 1/1RC, rpt from \* to \*\* (changing both incs to M1R) to last 3 sts, k3

**ROW 20 (WS):** k3, \*slm, knit to m, slm,\*\* p2, [k1, p1] twice, k4, 1/1 LC, k4, [p1, k1] twice, p2, rpt from \* to \*\* to last 3 sts, k3

**Row 21:** k3, \*slm, M1L, knit to m, M1L, slm,\*\* 1/1RC, p1, 1/1LPC, k1, p3, 1/1RPC, 1/1LPC, p3, k1, 1/1RPC, p1, 1/1RC, rpt from \* to \*\* (changing both incs to M1R) to last 3 sts, k3

**Row 23:** k3, \*slm, M1L, knit to m, M1L, slm,\*\* 1/1RC, p2, 2/1LPC, p1, 1/1RPC, p2, 1/1LPC, p1, 2/1RPC, p2, 1/1RC, rpt from \* to \*\* (changing both incs to M1R) to last 3 sts, k3

**Row 25:** k3, \*slm, M1L, knit to m, M1L, slm,\*\* 1/1RC, p3, 2/1LPC, k1, p4, k1, 2/1RPC, p3, 1/1RC, rpt from \* to \*\* (changing both incs to M1R) to last 3 sts, k3

**Row 27:** k3, \*slm, M1L, knit to 1 st before m, M1L, slm,\*\* 1/1RC, p4, 3/1LPC, p2, 3/1RPC, p4, 1/1RC, rpt from \* to \*\* (changing both incs to M1R) to last 3 sts, k3

**Row 29:** k3, \*slm, M1L, knit to m, M1L, slm,\*\* 1/1RC, p5, 3/1LPC, 3/1RPC, p5, 1/1RC, rpt from \* to \*\* (changing both incs to M1R) to last 3 sts, k3

**Row 31:** k3, \*slm, M1L, knit to m, M1L, slm,\*\* 1/1RC, p6, 3/3LC, p6, 1/1RC, rpt from \* to \*\* (changing both incs to M1R) to last 3 sts, k3 **(64 incs, 94 sts)**

**Rpt rows 1 – 32 once more (158 sts)**

**SECTION 2, USING LARGER SIZE NEEDLE WORK IN SMOCKED HONEYCOMB WITH CENTRE PANEL (32 rows) (yarn B if working 2 colours):**

**Row 1 (RS):** k3, \*slm, M1L, [k1, p3], rpt [ ] to 1 st before m, k1, M1L, slm,\*\* 1/1RC, p6, k6, p6, 1/1RC, rpt from \* to \*\* (changing both incs to M1R) to last 3 sts, k3

**Row 2 (& all WS rows except 12, 16 & 20):** maintaining 3 garter edge sts at each side, k all k sts & p all p sts

**Row 3:** k3, \*slm, M1L, p1, [T5, p3], rpt [ ] to 2 sts before m, k1, p1, M1L, slm,\*\* 1/1RC, p5, 3/1RPC, 3/1LPC, p5, 1/1RC, slm, M1R, p1, k1, [p3, T5] rpt [ ] to 1 st before m, p1, M1R, slm, k3

**Row 5:** k3, \*slm, M1L, p2, [k1, p3], rpt [ ] to 3 sts before m, k1, p2, M1L, slm,\*\* 1/1RC, p4, 3/1RPC, p2, 3/1LPC, p4, 1/1RC, rpt from \* to \*\* (changing both incs to M1R) to last 3 sts, k3

**Row 7:** k3, \*slm, M1L, p3, k1, [p3, T5], rpt [ ] to 3 sts before m, p3, M1L, slm,\*\* 1/1RC, p3, 2/1RPC, k1, p4, k1, 2/1LPC, p3, 1/1RC, slm, M1R, p3, [T5, p3], rpt [ ] to 4 sts before m, k1, p3, M1R, slm, k3

**Row 9:** k3, \*slm, M1L, [k1, p3], rpt [ ] to 1 st before m, k1, M1L, slm,\*\* 1/1RC, p2, 2/1RPC, p1, 1/1LPC, p2, 1/1RPC, p1, 2/1LPC, p2, 1/1RC, rpt from \* to \*\* (changing both incs to M1R) to last 3 sts, k3

**Row 11:** k3,\*slm, M1L, p1, k1, [p3,T5], rpt [ ] to 1 st before m, p1, M1L, slm,\*\* 1/1RC, p1, 1/1RPC, k1, p3, 1/1LPC, 1/1RPC, p3, k1, 1/1LPC, p1, 1/1RC, slm, M1R, p1, [T5, p3], rpt [ ] to 2 sts before m, k1, p1, M1R, slm, k3

**ROW 12 (WS):** k3, \*slm, k all k sts & p all p sts to m, slm,\*\* p2, [k1, p1] twice, k4, 1/1LC, k4, [p1, k1] twice, p2, rpt from \* to \*\* to last 3 sts, k3

**Row 13:** k3, \*slm, M1L, p2, [k1, p3], rpt [ ] to 3 sts before m, k1, p2, M1L, slm,\*\* 1/1RC, 1/1RPC, p1, [1/1LPC, p2, 1/1RPC] twice, p1, 1/1LPC, 1/1RC, rpt from \* to \*\* (changing both incs to M1R) to last 3 sts, k3

**Row 15:** k3, \*slm, M1L, [p3, T5], rpt [ ] to 7 sts before m, p3, k1, p3, M1L, slm,\*\* 1/1RC, k1, p3, [1/1LPC, 1/1RPC, p2] twice, p1, k1, 1/1RC, slm, M1R, p3, k1, p3, [T5, p3], rpt [ ] to m, M1R, slm, k3

**ROW 16 (WS):** k3, \*slm, k all k sts & p all p sts to m, slm,\*\* p3, k4, [1/1RC, k4] twice, p3, rpt from \* to \*\* to last 3 sts, k3

**Row 17:** k3, \*slm, M1L, [k1, p3], rpt [ ] to 1 st before m, k1, M1L, slm,\*\* 1/1RC, k1, p3, [1/1RPC, 1/1LPC, p2] twice, p1, k1, 1/1RC, rpt from \* to \*\* (changing both incs to M1R) to last 3 sts, k3



**Row 19:** k3, \*slm, M1L, p1, [T5, p3], rpt [ ] to 2 sts before m, k1, p1, M1L, slm,\*\* 1/1RC, 1/1LPC, p1, [1/1RPC, p2, 1/1LPC] twice, p1, 1/1RPC, 1/1RC, slm, M1R, p1, k1, [p3, T5] rpt [ ] to 1 st before m, p1, M1R, slm, k3

**ROW 20 (WS):** k3, \*slm, k all k sts & p all p sts to m, slm,\*\* p2, [k1, p1] twice, k4, 1/1 LC, k4, [p1, k1] twice, p2, rpt from \* to \*\* to last 3 sts, k3

**Row 21:** k3, \*slm, M1L, p2, [k1, p3], rpt [ ] to 3 sts before m, k1, p2, M1L, slm,\*\* 1/1RC, p1, 1/1LPC, k1, p3, 1/1RPC, 1/1LPC, p3, k1, 1/1RPC, p1, 1/1RC, rpt from \* to \*\* (changing both incs to M1R) to last 3 sts, k3

**Row 23:** k3, \*slm, M1L, p3, k1, [p3, T5], rpt [ ] to 3 sts before m, p3, M1L, slm,\*\* 1/1RC, p2, 2/1LPC, p1, 1/1RPC, p2, 1/1LPC, p1, 2/1RPC, p2, 1/1RC, slm, M1R, p3, [T5, p3], rpt [ ] to 4 sts before m, k1, p3, M1R, slm, k3

**Row 25:** k3, \*slm, M1L, [k1, p3], rpt [ ] to 1 st before m, k1, M1L, slm,\*\* 1/1RC, p3, 2/1LPC, k1, p4, k1, 2/1RPC, p3, 1/1RC, rpt from \* to \*\* (changing both incs to M1R) to last 3 sts, k3

**Row 27:** k3, \*slm, M1L, p1, k1, [p3, T5], rpt [ ] to 1 st before m, p1, M1L, slm,\*\* 1/1RC, p4, 3/1LPC, p2, 3/1RPC, p4, 1/1RC, slm, M1R, p1, [T5, p3], rpt [ ] to 2 sts before m, k1, p1, M1R, slm, k3

**Row 29:** k3, \*slm, M1L, p2, [k1, p3], rpt [ ] to 3 sts before m, k1, p2, M1L, slm,\*\* 1/1RC, p5, 3/1LPC, 3/1RPC, p5, 1/1RC, rpt from \* to \*\* (changing both incs to M1R) to last 3 sts, k3

**Row 31:** k3, \*slm, M1L, [p3, T5], rpt [ ] to 7 sts before m, p3, k1, p3, M1L, slm,\*\* 1/1RC, p6, 3/3LC, p6, 1/1RC, slm, M1R, p3, k1, p3, [T5, p3] rpt [ ] to m, M1R, slm, k3 (**64 incs in this section, 222 sts**)

**USING SMALLER SIZE NEEDLE, WORK 32 ROWS SECTION 1 (64 inc, 286 sts) (yarn A if working 2 colours)**

**USING LARGER NEEDLE, WORK 16 ROWS SECTION 2 (32 incs, 318 sts) (yarn B if working 2 colours)**

**CONTINUE WORKING EITHER VERSION A OR B AS FOLLOWS:**

**VERSION A ONLY (using larger size needle for rest of shawl):**

**ACROSS ALL STS WORK 8 ROWS GARTER STITCH (keeping incs at side edges only) (8 incs, 326 sts) (yarn B if working 2 colours)**

RS: BO purlwise loosely. I used the \*p2tog, place st back on l needle and rpt from \* method

Block & enjoy. :)

**VERSION B ONLY: (using larger size needle for rest of shawl):**

**WORK 16 ROWS SECTION 1, increasing 1 st by kfb at centre of last row (32 incs & 1 extra inc, 351 sts) (yarn B if working 2 colours)**

**ACROSS ALL STS (remove centre markers & keeping incs at side edges only), WORK 24 ROWS HORSE SHOE BORDER (yarn A & yarn B if needed if working 2 colours) :**

**Row 1 (RS):** k3, slm, M1L, k2, k2tog, k3, YO, \*k1, YO, k3, s2kp2sso, k3, YO\*\*, rpt from \* to \*\* to 8 st before m, k1, YO, k3, ssk, k2, M1R, slm, k3

**Row 2 (& all even rows):** knit

**Row 3:** k3, slm, M1L, YO, k2, s2kp2sso, k2, YO, k1, \*k2, YO, k2, s2kp2sso, k2, YO, k1\*\*, rpt from \* to \*\* to 9 sts before m, k2, YO, k2, s2kp2sso, k2, YO, M1R, slm, k3

**Row 5:** k3, slm, M1L, k2, YO, k1, s2kp2sso, k1, YO, k2, \*k3, YO, k1, s2kp2sso, k1, YO, k2\*\*, rpt from \* to \*\* to m, M1R, slm, k3

**Row 7:** k3, slm, M1L, k4, YO, s2kp2sso, YO, k3, \*k4, YO, s2kp2sso, YO, k3\*\*, rpt from \* to \*\* to 1 st before m, k1, M1R, slm, k3

**Row 9:** k3, slm, M1L, k1, \*k1, YO, k3, s2kp2sso, k3, YO\*\*, rpt from \* to \*\* to 2 sts before m, k2, M1R, slm, k3

**Row 11:** k3, slm, M1L, k2, \*k2, YO, k2, s2kp2sso, k2, YO, k1\*\*, rpt from \* to \*\* to 3 sts before m, k3, M1R, slm, k3

**Row 13:** k3, slm, M1L, k3, \*k3, YO, k1, s2kp2sso, k1, YO, k2\*\*, rpt from \* to \*\* to 4 sts before m, k4, M1R, slm, k3

**Row 15:** k3, slm, M1L, k4, \*k4, YO, s2kp2sso, YO, k3\*\*, rpt from \* to \*\* to 5 sts before m, k5, M1R, slm, k3

**Row 17:** k3, slm, M1L, k2tog, k3, YO, \*k1, YO, k3, s2kp2sso, k3, YO\*\*, rpt from \* to \*\* to 6 sts before m, k1, YO, k3, ssk, M1R, slm, k3

**Row 19:** k3, slm, M1L, k1, k2tog, k2, YO, k1, \*k2, YO, k2, s2kp2sso, k2, YO, k1\*\*, rpt from \* to \*\* to 7 sts before m, k2, YO, k2, ssk, k1, M1R, slm, k3

**Row 21:** k3, slm, M1L, YO, k1, s2kp2sso, k1, YO, k2, \*k3, YO, k1, s2kp2sso, k1, YO, k2\*\*, rpt from \* to 8 sts before m, k3, YO, k1, s2kp2sso, k1, YO, M1R, slm, k3

**Row 23:** k3, slm, M1L, k2, YO, s2kp2sso, YO, k3, \*k4, YO, s2kp2sso, YO, k3\*\*, rpt from \* to \*\* to 9 sts before m, k4, YO, s2kp2sso, YO, k2, M1R, slm, k3

**(24 incs, 375 sts)**

**Note:** My Madelinetosh skeins weighed heavy (equivalent to 222 g), if you are short of yarn, the lace section can be ended after row 16.

RS: BO purlwise loosely. I used the \*p2tog, place st back on l needle and rpt from \* method

Block gently to maintain texture, pulling out smocked areas sideways more if needed & enjoy. :)

## **DIRECTIONS FOR CHARTS:**

**NB:** read all charts right to left for RS rows as normal, EXCEPT the rpt of Smocked Honeycomb chart for second half of shawl (after the centre chart) is mirrored and so read from left to right. Note also that for the Horse Shoe Border chart WS rows (all knit) are not shown.

### **BOTH VERSIONS:**

After set up (see page 3):

Section 1. Using smaller needle: work in garter stitch either side of centre chart, increasing 4 sts in total on RS rows (M1L for first half & M1R for second half) inside 3st side edges and either side of centre chart for 64 rows. Centre chart will be worked twice. (124 incs, **158 sts**)

Section 2. Using larger needle: work Smocked Honeycomb chart with Centre chart, continuing increases as set for 32 rows. (64 incs, **222 sts**)

3. Using smaller needle: rpt section 1. for 32 rows. (62 incs, **286 sts**)

4. Using larger needle: rpt section 2. for 16 rows. (This will end at row 16 of Centre chart.) (32 incs, **318 sts**)

VERSION A ONLY & USING LARGER NEEDLE FOR REST OF SHAWL:

5. ACROSS ALL STS work 8 rows garter st, maintaining incs at side edges only. (8 incs, **326 sts**)

VERSION B ONLY & USING LARGER NEEDLE FOR REST OF SHAWL:

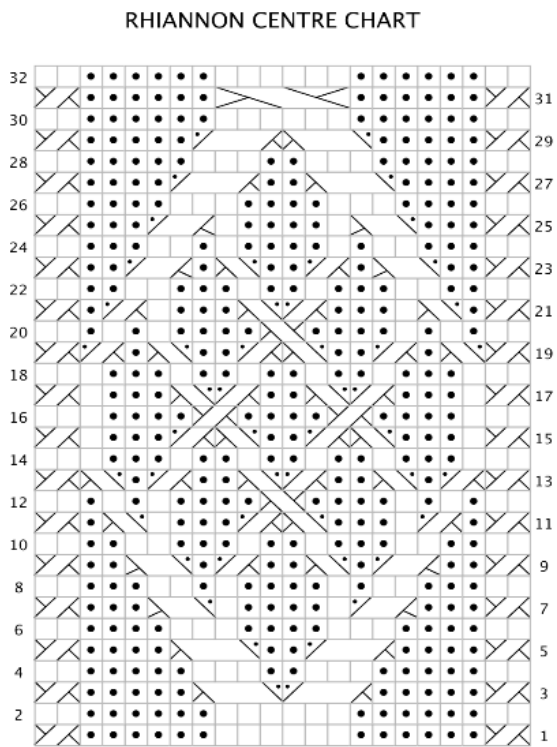
5. rpt section 1. for 16 rows, INC 1 st (kfb) at centre last row. (32 incs, & 1 extra inc, **351 sts**)

6. ACROSS ALL STS work Horse Shoe Border chart for 24 rows, maintaining incs at side edges only. (24 incs, **375 sts**)

**Note:** if you are short of yarn, the lace section can be ended after row 16.

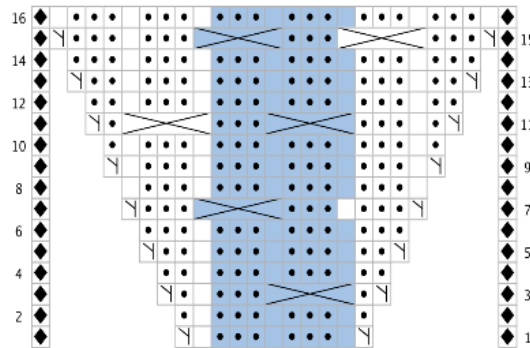
**BOTH VERSIONS:** RS: BO purlwise loosely. I used the \*p2tog, place st back on l needle and rpt from \* method. Block VERY gently to maintain texture, pulling out smocked areas sideways more if needed & enjoy. :)

# CHARTS

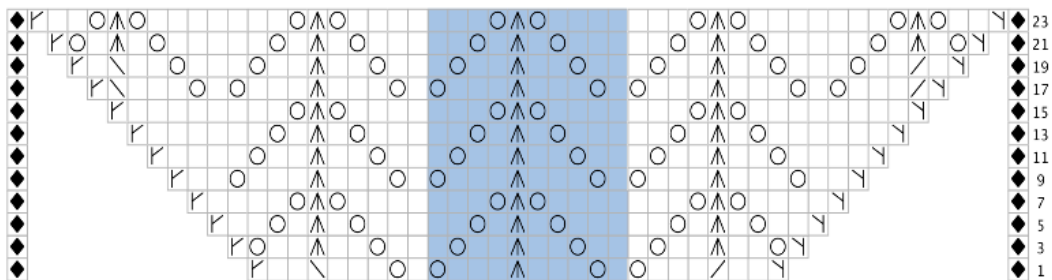


- KEY
- repeat
  - RS: slip marker  
WS: slip marker
  - RS: knit  
WS: purl
  - RS: purl  
WS: knit
  - RS: M1L
  - RS: M1R
  - RS: k2tog
  - RS: ssk
  - RS: s2kp2sso
  - RS: yo
  - RS: 1/1 LC  
WS: 1/1 LC
  - RS: 1/1 RC  
WS: 1/1 RC
  - RS: 1/1 LPC
  - RS: 1/1 RPC
  - RS: 2/1 LPC
  - RS: 2/1 RPC
  - RS: 3/1 LPC
  - RS: 3/1 RPC
  - RS: 3/3 LC
  - RS: Tie 5: place 5 sts on cn,  
tie yarn around sts twice,  
k1, p3, k1

RHIANNON SMOCKED HONEYCOMB CHART for right half shawl. For left half work from left to right (mirror) BUT changing M1L to M1R



RHIANNON HORSE SHOE BORDER CHART (WS KNIT rows are not shown)





**VERSION A (MEDIUM)**



**VERSION B (LARGE)**



p/hop is pennies per hour of pleasure, so please feel free to use this pattern, then donate what you think it was worth to you to MSF.

MSF is an independent humanitarian medical aid organisation, committed to providing medical aid wherever it is needed, regardless of race, religion, politics or gender. We currently work in over 60 countries helping victims of war, natural disasters, disease epidemics and those who simply have no access to even basic healthcare. For more info, please visit [www.msf.org.uk](http://www.msf.org.uk)

To donate or find out more about p/hop, please visit the p/hop blog at [www.p-hop.co.uk](http://www.p-hop.co.uk).

**Thank you for supporting MSF!**