

Staircase Mitts

By Karen Butler

The colourwork pattern on these mitts reminds me of staircases. Instructions for left and right mitts are identical, designed to avoid a beginning of round pattern jog.



This design has been kindly donated to Médecins Sans Frontières as part of the **p/hop** project. **p/hop** = pennies per hours of pleasure. Please enjoy this knitting pattern and in return donate what you think it was worth to MSF.

To find out more and donate visit www.p-hop.co.uk

Find out more about MSF at www.msf.org.uk

Thank you for supporting MSF! Happy Knitting!



SIZE

To fit 16½(19:21½)cm / 6½(7½:8½)in hand circumference. Unstretched hand circumference is 15½(18:21)cm / 6(7:8¼)in; choose a size with 0–2cm / 0–¾in negative ease. Small / Large Thumb circumference 6½(8)cm / 2½(3)in (use either for all sizes). All sizes are 18½cm / 7¼in long.

YARN

Two colours of 4 ply/fingering weight yarn, each with approx 105 metres (115 yards) per 25g; one ball each of main and contrast colours.

NEEDLES AND NOTIONS

Use preferred needles for small diameter knitting in the following size:

- 2.75mm (US 2).

Adjust needle size to achieve required gauge.

- 2 stitch markers;
- Waste yarn;
- Darning or yarn needle.

TENSION/GAUGE

32 sts and 40 rounds per 10cm / 4in in corrugated rib worked in the round.

32 sts and 34 rounds per 10cm / 4in in stranded pattern worked in the round.

Staircase Mitts are worked from the bottom up in the round, starting with a German Twisted Cast-on and a corrugated rib before establishing the stranded colourwork pattern of the hand. Increases are worked to shape the thumb gusset. Thumb stitches are then put aside before working the rest of the hand and corrugated rib. The thumb is completed with a corrugated rib to match.

CUFF

Using the CC yarn, 2.75mm / US 2 needles and the German Twisted cast-on method, cast on 48(56:64) sts. Join for working in the round and pm for BOR.

Join in the MC yarn and work 12 rounds of Corrugated Rib as follows:

Corrugated Rib Round: *k2 in MC, p2 in CC; repeat from * to end, sm.

ABBREVIATIONS

BOR	beginning of round
CC	contrast colour
k	knit
k2tog	knit 2 sts together
lia	lifted increase after; insert the passive needle under the nearest side of the st 2 rows below the last st made, then knit into the back of the st.
lib	lifted increase before; insert the working needles under the nearest side of the st below the next st to be worked, lift the st onto the passive needle and knit it.
m1	make 1
MC	main colour
p	purl
p2tog	purl 2 sts together
pm	place marker
rm	remove marker
RS	right side
sm	slip marker
st(s)	stitch(es)

For pattern support, visit:

<http://www.ravelry.com/groups/karen-butler-designs>

Then, using CC only, work 1 round according to size as follows:

Small Set-up Round: k to last 2 sts, pm, k1, m1, k1, sm. (49 sts)

Medium Set-up Round: k3, m1, k to last 2 sts, pm, k1, m1, k1, sm. (58 sts)

Large Set-up Round: k3, m1, k4, m1, k to last 2 sts, pm, k1, m1, k1, sm. (67 sts)

HAND AND THUMB GUSSET

The thumb gusset will be worked between the new marker and the BOR marker. Start the stranded patterns as shown in the Chart on page 4, working Rounds 1–26 as follows:

Rounds 1–26: k columns 1–3, work columns 4–12 4(5:6) times. Then working from column 13, k to end slipping thumb gusset marker and working gusset increases as instructed, sm.

After working Round 26, you will have 65(74:83) sts.

SEPARATE THUMB

Separate the thumb sts as follows:

Thumb Separation Round 27: k to marker following Chart as established, rm, place the 19 thumb sts on waste yarn, then using the backwards loop method, cast on 2 sts with CC, sm. 48(57:66) sts

Continue in established pattern following the Chart until the end of Round 37.

CORRUGATED RIB

Using CC only, knit 1 round, decreasing if indicated as follows:

Small Next Round: k to end, sm. (48 sts)

Medium Decrease Round: k2, k2tog, k to end, sm. (56 sts)

Large Decrease Round: k2, k2tog, k to last 6 sts, k2tog, k4, sm. (64 sts)

Then work 12 rounds of Corrugated Rib as follows:

Corrugated Rib Round: *k2 in MC, p2 in CC; repeat from * to end, sm.

Cast off using CC. Break off yarn leaving 15cm / 6in tails; pull the CC yarn through the remaining st. Using the darning needle, sew the CC tail under the first cast-off st, then back into the final cast-off st.

THUMB

Note: work Small (Large) Thumb depending on thumb size and preferred fit.

Place the 19 thumb sts onto 2.75mm / US 2 needles. Join in CC yarn, and work one round for Small (Large) Thumb:

Set-up Round: k19, pick up and k3(5) sts from the previously cast-on sts, pm. 22(24) sts

Join in MC and establish corrugated rib, following instructions according to size:

Small Thumb Only: *k2 in MC, p2 in CC; repeat from * to last 6 sts, then k2 in MC, (p2tog) twice in CC, sm. 20(-) sts

Then for Small (Large) Thumb work 7(8) rounds in Corrugated Rib as follows:

Corrugated Rib Round: *k2 in MC, p2 in CC; repeat from * to end, sm.

Cast off using CC. Break off yarn leaving 15cm / 6in tails and finish as for hand.

FINISHING

Using the darning needle weave in ends, then block the mitts.

This design has been kindly donated to Médecins Sans Frontières/ Doctors Without Borders (MSF) as part of the p/hop project. p/hop = pennies per hour of pleasure. Please feel free to use this pattern and donate what you think it was worth to you to MSF.

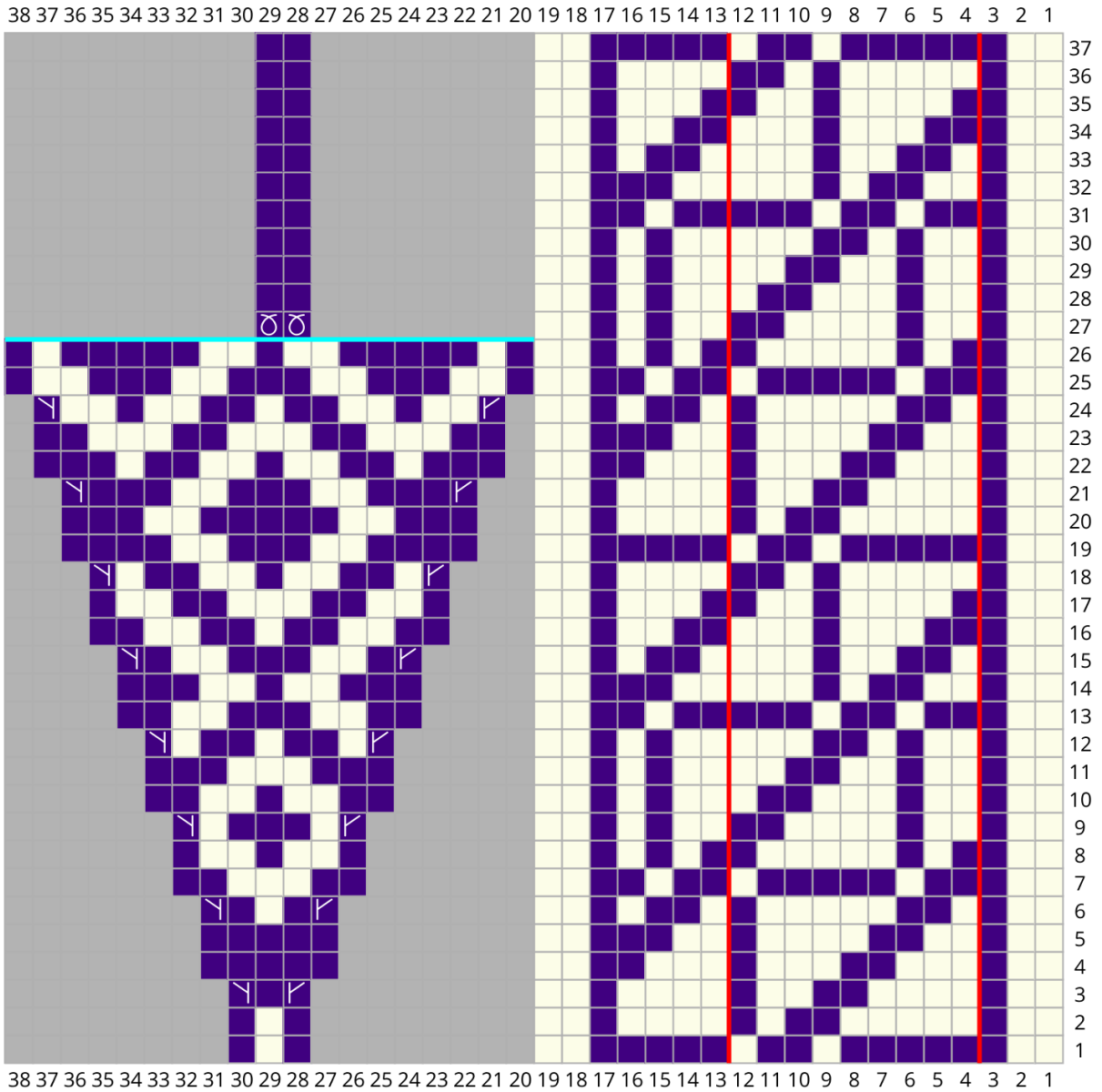
MSF is an independent humanitarian medical aid organisation, committed to providing medical aid wherever it is needed, regardless of race, religion, politics or gender. We currently work in over 60 countries helping victims of war, natural disasters, disease epidemics and those who simply have no access to even basic healthcare. For more info, please visit www.msf.org.uk

To donate and find out more about p/hop, please visit the p/hop website at www.p-hop.co.uk

Thank you for supporting MSF!



Chart



Key

- MC
- CC
- ↙ lia
- ↘ lib
- ∅ backwards loop cast-on
- pattern repeat
- sts put aside for thumb in round 27
- no stitch

Work repeat 4(5:6) times

Chart Notes

Round Instructions: k columns 1–3, work columns 4–12 4(5:6) times. Then working from column 13, k to end slipping thumb gusset marker and working gusset increases as instructed, sm.