

This design has been kindly donated to Médecins Sans Frontières as part of the p/hop project. p/hop is pennies per hour of pleasure, so please feel free to use this pattern, then donate what you think it was worth to MSF.

Find out more and donate at www.msf.org.uk/phop
Or, visit the p/hop blog at www.p-hop.co.uk

Thank you for supporting MSF!



The Trinity Shawlette

By Anniken Allis of Anni Design



Version 3 – YarnAddict Glorious Sock Yarn. Version 2 – YarnAddict Organic Merino. Version 1 – YarnAddict Angel Sock Yarn. Version 3.

Triangular shawl worked in one piece from the back of the neck downwards . Choose between 3 versions.

Needed:

1 skein/350-400 m sock yarn
4 or 4.5mm/US6 or 7 circular needle

Blunt sewing needles

Size:

Length: 53cm – 58cm
Width: 110cm - 140 cm

Tension:

25 sts & 34 rows in stocking stitch using 4mm needles.
Tension is not essential.

Abbreviations:

Co – cast on
K – knit
P – purl
RS – right side
WS – wrong side
Rep(s) – repeat(s)
ndl(s) – needle(s)
st(s) – stitch(es)
K2tog – k 2 sts together

Pattern Notes:

This pattern consists of 2 easy lace patterns. Combine both patterns or knit them separately giving you 3 different options. The shawl/shawlette can be worked in any yarn weight, just change the needles to a size to suit your chosen yarn. You can easily make the shawl bigger or smaller by working fewer or more repeats.

Pattern:

For all versions:

CO 7 sts.

Work every RS row as follows: k2, work chart, k1, work chart, k2.
Work every WS row as follows: k2, work chart, p1, work chart, k2.

The instructions below are a guide only. You may have to work fewer repeats depending on how much yarn you have.

Version 1:

Work chart 1 once then work the pattern repeat (rows 31-40) another 7-8 times. Work the border chart once.

Version 2:

Work chart 2 once then work the pattern repeat (rows 31-40) another 7-8 times. Work border chart once.

Version 3:

Work chart 1 once then work the pattern repeat (rows 31-40) 5-6 more times, then work the pattern repeat only from chart 2 (rows 31 -40) twice. Work border chart once.

Bind off on last row (WS) using Russian Bind Off.

Russian Bind Off:

K2, slip sts back to left ndl, k2tog. *k1, slip both sts back to left ndl, k2tog. Rep from * to end.

Finishing:

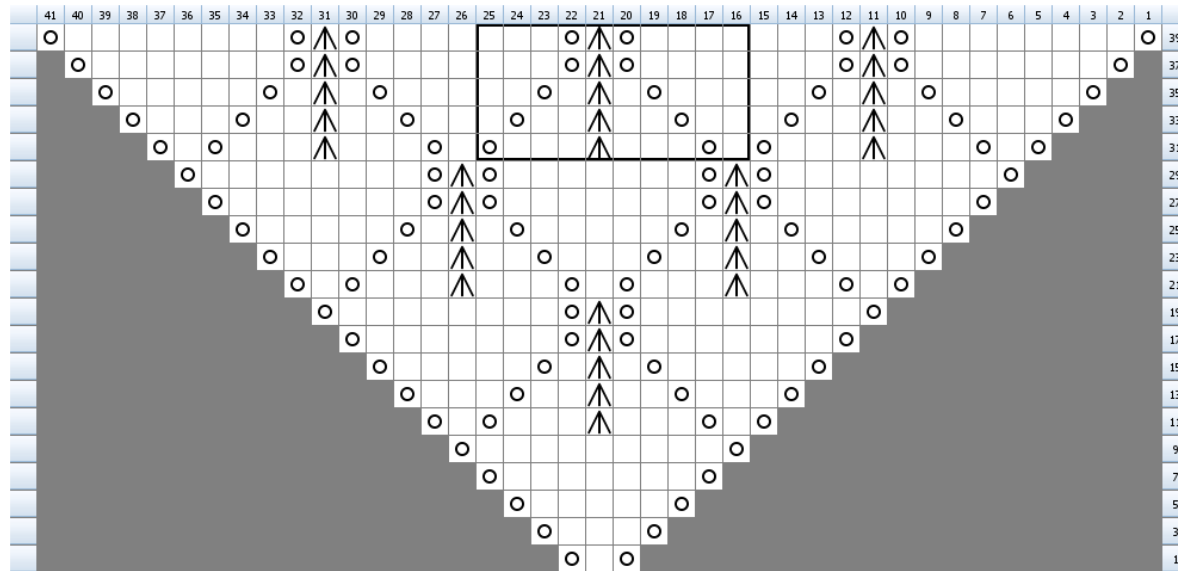
Weave in loose ends. Soak shawl in lukewarm water until thoroughly wet. Squeeze out excess water in a towel. Stretch out on a flat surface and pin to size. Leave to dry.

Copyright – Anni Design, August 2009

Please do not sell this pattern or any items made from it without my permission.

www.yarnaddict.co.uk

Chart 1



Created in KnitVisualizer (www.knitfoundry.com)

Legend:

No Stitch
Placeholder - No stitch made.

yo
Yarn Over

knit
knit stitch

Central Double Dec
Slip first and second stitches together as if to knit. Knit 1 stitch. Pass two slipped stitches over the knit stitch.

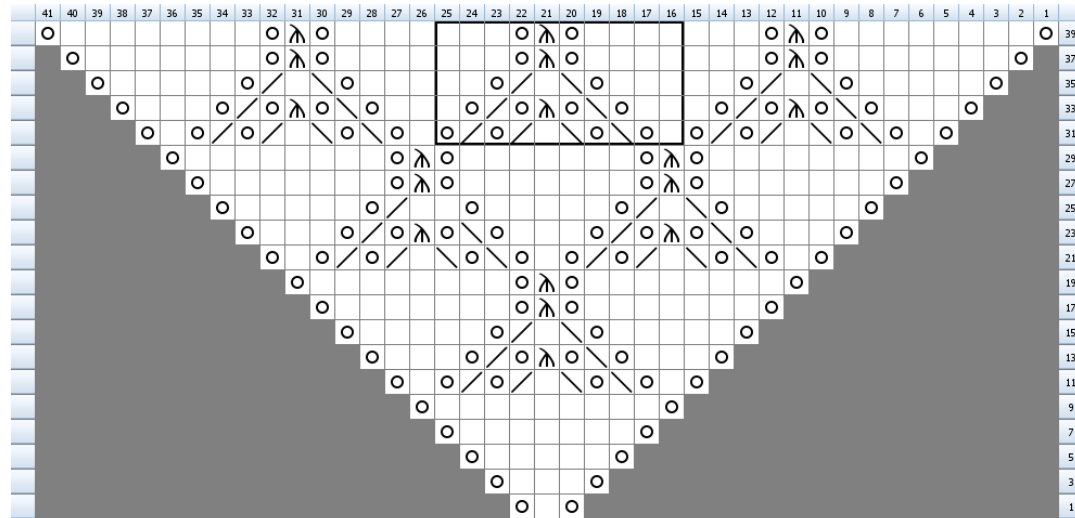
Notes:

Only right side rows are charted, purl wrong side rows.
Pattern repeat is inside border.

Pattern:

R1 (RS): yo, k1, yo
R3: yo, k3, yo
R5: yo, k5, yo
R7: yo, k7, yo
R9: yo, k9, yo
R11: yo, k1, yo, k3, dbl dec, k3, yo, k1, yo
R13: yo, k3, yo, k2, dbl dec, k2, yo, k3, yo
R15: yo, k5, yo, k1, dbl dec, k1, yo, k5, yo
R17: yo, k7, yo, dbl dec, yo, k7, yo
R19: yo, k8, yo, dbl dec, yo, k8, yo
R21: yo, k1, yo, k3, dbl dec, k3, yo, k1, yo, k3, dbl dec, k3, yo, k1, yo
R23: yo, k3, yo, k2, dbl dec, k2, yo, k3, yo, k2, dbl dec, k2, yo, k3, yo
R25: yo, k5, yo, k1, dbl dec, k1, yo, k5, yo, k1, dbl dec, k1, yo, k5, yo
R27: yo, k7, yo, dbl dec, yo, k7, yo, dbl dec, yo, k7, yo
R29: yo, k8, yo, dbl dec, yo, k7, yo, dbl dec, yo, k8, yo
R31: yo, k1, yo, k3, dbl dec, k3, yo, k1, yo, k3, dbl dec, k3, yo, k1, yo, k3, dbl dec, k3, yo, k1, yo
R33: yo, k3, yo, k2, dbl dec, k2, yo, k3, yo, k2, dbl dec, k2, yo, k3, yo, k2, dbl dec, k2, yo, k3, yo
R35: yo, k5, yo, k1, dbl dec, k1, yo, k5, yo, k1, dbl dec, k1, yo, k5, yo, k1, dbl dec, k1, yo, k5, yo
R37: yo, k7, yo, dbl dec, yo, k7, yo, dbl dec, yo, k7, yo, dbl dec, yo, k7, yo
R39: yo, k8, yo, dbl dec, yo, k7, yo, dbl dec, yo, k8, yo

Chart 2



Created in KnitVisualizer (www.knitfoundry.com)

Legend:

- No Stitch**
Placeholder - No stitch made.
- yo**
Yarn Over
- knit**
knit stitch
- ssk**
Slip one stitch as if to knit, Slip another stitch as if to knit. Insert left-hand needle into front of these 2 stitches and knit them together
- k2tog**
Knit two stitches together as one stitch
- sl1 k2tog pssso**
slip 1, k2tog, pass slip stitch over k2tog

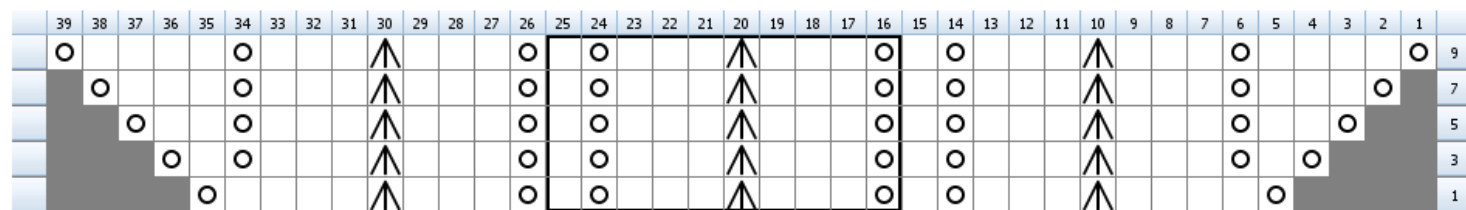
Notes:

Only R5 rows are charted. Purl all W5 rows.
Pattern repeat is show inside border.

Pattern:

R1 (R5): yo, k1, yo
R3: yo, k3, yo
R5: yo, k5, yo
R7: yo, k7, yo
R9: yo, k9, yo
R11: yo, k1, yo, ssk, yo, ssk, k1, k2tog, yo, k2tog, yo, k1, yo
R13: yo, k3, yo, ssk, yo, sl1 k2tog pssso, yo, k2tog, yo, k3, yo
R15: yo, k5, yo, ssk, k1, k2tog, yo, k5, yo
R17: yo, k7, yo, sl1 k2tog pssso, yo, k7, yo
R19: yo, k8, yo, sl1 k2tog pssso, yo, k8, yo
R21: yo, k1, yo, ssk, yo, ssk, k1, k2tog, yo, k2tog, yo, k1, yo, ssk, yo, ssk, k1, k2tog, yo, k2tog, yo, k1, yo
R23: yo, k3, yo, ssk, yo, sl1 k2tog pssso, yo, k2tog, yo, k3, yo, ssk, yo, sl1 k2tog pssso, yo, k2tog, yo, k3, yo
R25: yo, k5, yo, ssk, k1, k2tog, yo, k5, yo, k2, k2tog, yo, k5, yo
R27: yo, k7, yo, sl1 k2tog pssso, yo, k7, yo, sl1 k2tog pssso, yo, k7, yo
R29: yo, k8, yo, sl1 k2tog pssso, yo, k7, yo, sl1 k2tog pssso, yo, k8, yo
R31: yo, k1, yo, ssk, yo, ssk, k1, k2tog, yo, k2tog, yo, k1, yo, ssk, yo, ssk, k1, k2tog, yo, k2tog, yo, k1, yo, ssk, yo, ssk, k1, k2tog, yo, k2tog, yo, k1, yo
R33: yo, k3, yo, ssk, yo, sl1 k2tog pssso, yo, k2tog, yo, k3, yo, ssk, yo, sl1 k2tog pssso, yo, k2tog, yo, k3, yo, ssk, yo, sl1 k2tog pssso, yo, k2tog, yo, k3, yo
R35: yo, k5, yo, ssk, k1, k2tog, yo, k5, yo, ssk, k1, k2tog, yo, k5, yo, ssk, k1, k2tog, yo, k5, yo
R37: yo, k7, yo, sl1 k2tog pssso, yo, k7, yo, sl1 k2tog pssso, yo, k7, yo, sl1 k2tog pssso, yo, k7, yo
R39: yo, k8, yo, sl1 k2tog pssso, yo, k7, yo, sl1 k2tog pssso, yo, k7, yo, sl1 k2tog pssso, yo, k8, yo

Border Chart




Created in KnitVisualizer (www.knitfoundry.com)

Legend:

 **No Stitch**
Placeholder - No stitch made.

 **yo**
Yarn Over

 **knit**
knit stitch

 **Central Double Dec**
Slip first and second stitches together as if to knit. Knit 1 stitch. Pass two slipped stitches over the knit stitch.

Notes:

Only R5 rows are shown. Purl WS rows.
Area inside border is pattern repeat.

Pattern:

R1 (RS): yo, k4, dbl dec, k3, yo, k1, yo, k3, dbl dec, k3, yo, k1, yo, k3, dbl dec, k4, yo
 R3: yo, k1, yo, k3, dbl dec, k3, yo, k1, yo, k3, dbl dec, k3, yo, k1, yo, k3, dbl dec, k3, yo, k1, yo
 R5: yo, k2, yo, k3, dbl dec, k3, yo, k1, yo, k3, dbl dec, k3, yo, k1, yo, k3, dbl dec, k3, yo, k2, yo
 R7: yo, k3, yo, k3, dbl dec, k3, yo, k1, yo, k3, dbl dec, k3, yo, k1, yo, k3, dbl dec, k3, yo, k3, yo
 R9: yo, k4, yo, k3, dbl dec, k3, yo, k1, yo, k3, dbl dec, k3, yo, k1, yo, k3, dbl dec, k3, yo, k4, yo

This design has been kindly donated to Médecins Sans Frontières as part of the p/hop project. p/hop is pennies per hour of pleasure, so please feel free to use this pattern, then donate what you think it was worth to you to MSF.

MSF is an independent humanitarian medical aid organisation, committed to providing medical aid wherever it is needed, regardless of race, religion, politics or gender. We currently work in over 60 countries helping victims of war, natural disasters, disease epidemics and those who simply have no access to even basic healthcare. For more info, please visit www.msf.org.uk

To donate or find out more about p/hop, please visit the p/hop blog at www.p-hop.co.uk.

Thank you for supporting MSF!